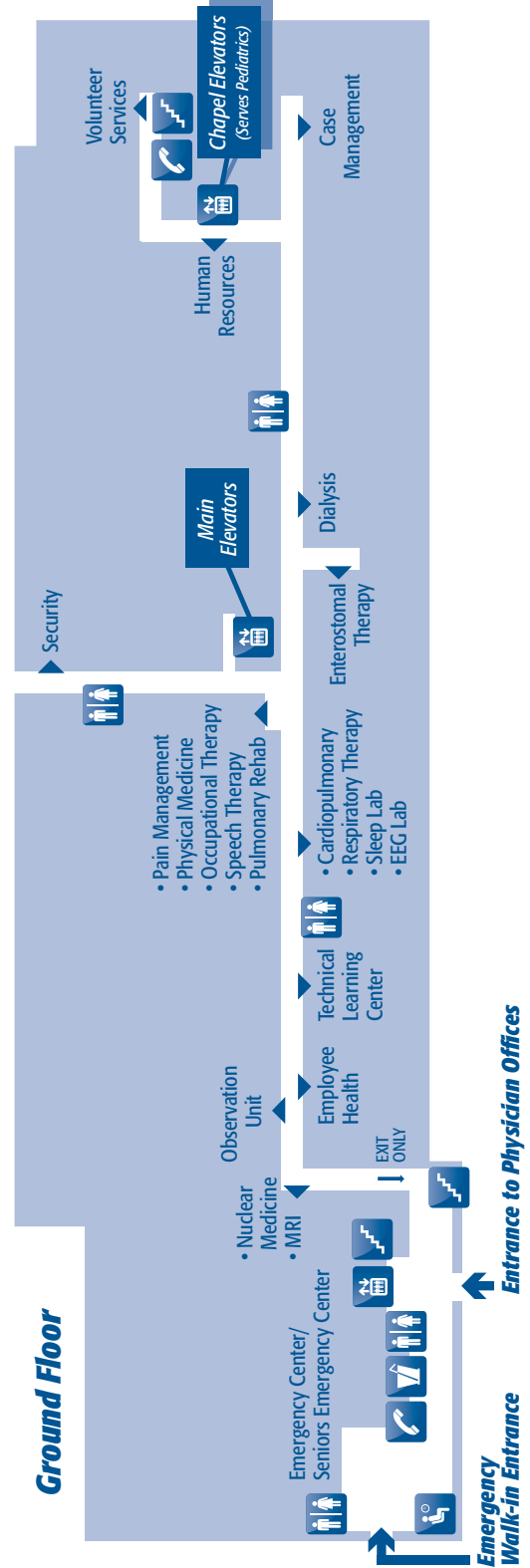
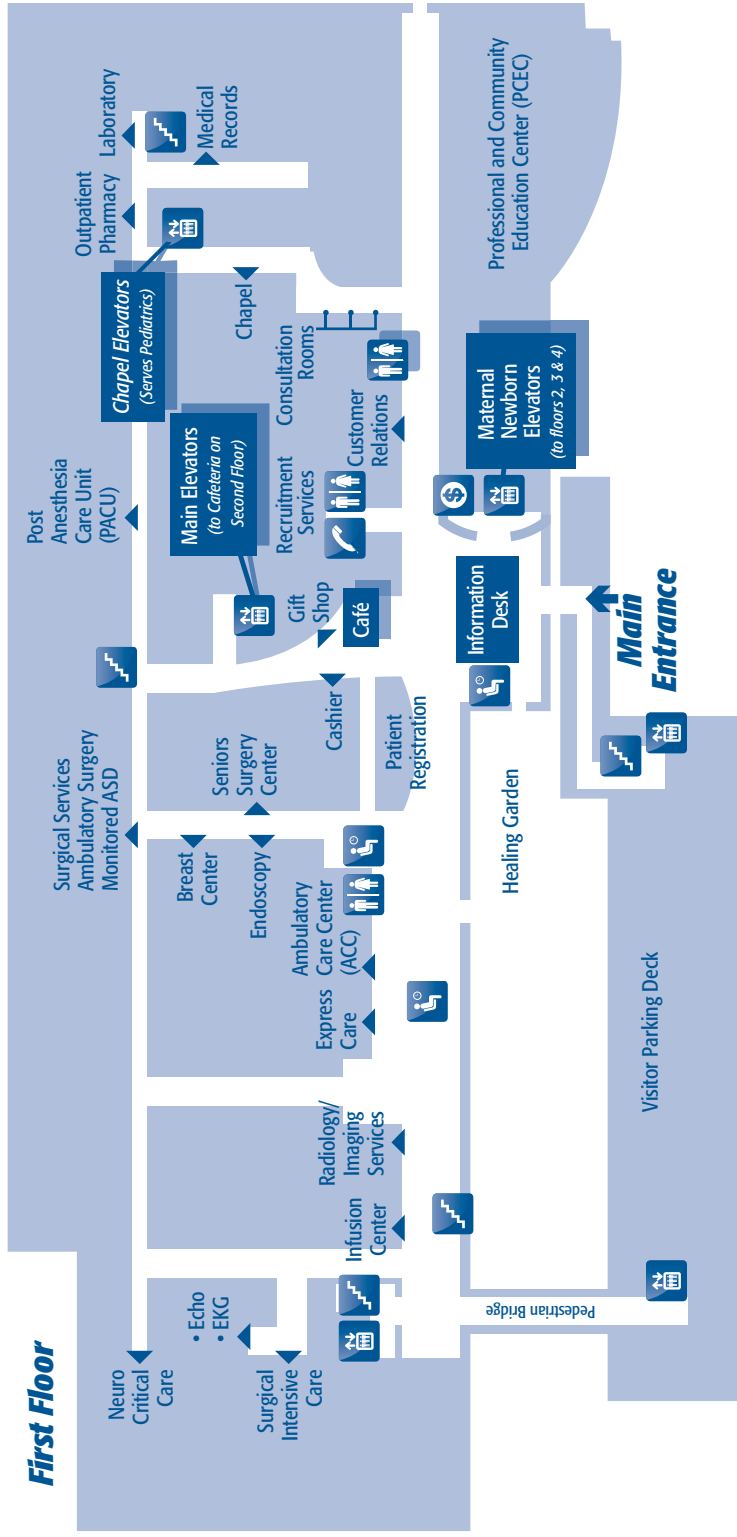


Holy Cross Hospital Map



Area	Floor
Ambulatory Care Center (ACC)	1
Ambulatory Surgery Dept (ASD)	1
Breast Center	1
Cafeteria	2
Cashier	1
Chapel	1
Coronary Care Unit (CCU)	7
Coronary Intermediate Care (CIC)	7
Customer Relations	1
Dialysis	G
Echo/EKG	1
Education Center	1
Emergency Center	G
Endoscopy	1
Express Care	1
Gift Shop	1
High Risk Perinatal Center	3
Human Resources	G
Infusion Center	1
Intensive Care Unit (ICU)	6
Intermediate Care Unit (IMC)	6
Joint Center and Spine Center	8
Labor & Delivery	3
Laboratory	1
Maternity Suites	4
Medical Library	2
Medical Records	1
Medical Units	5,6
MRI	G
Neonatal Intensive Care Unit (NICU)	3
Neuro Critical Care Unit	1
Nuclear Medicine	G
OB/GYN Clinic	2
Observation Unit	G
Oncology Unit	6
Orthopedic Unit	5
Pain Management	G
Patient Registration	1
Pediatric Unit	8
Perinatal Diagnostic Center (PDC)	3
Pharmacy, Outpatient	1
Physical/Occupational/Speech Therapy	G
Radiology/Imaging Services (X-Ray)	1
Respiratory Therapy	G
Security	G
Seniors Surgery Center	1
Seniors Emergency Center	G
Sleep Lab	G
Surgical Intensive Care Unit (SICU)	1
Surgical Units	5
Volunteer Services	G



HOLY CROSS HOSPITAL
1500 Forest Glen Road • Silver Spring, MD 20910
301-754-7000 • www.holycrosshealth.org